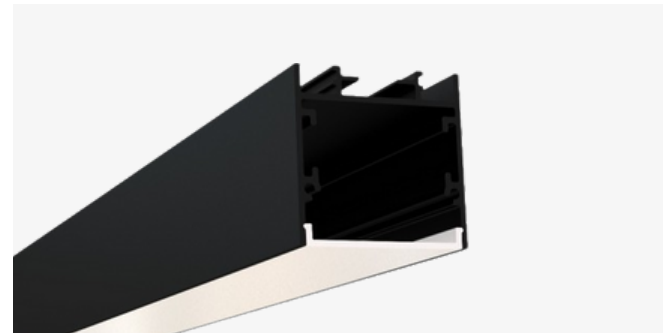


SL-910-B-94

Surface / Pendant Mount LED Channel

Description

The SL-910-B-94 is a black finish, surface or pendant mount LED channel. It includes a channel, lens, end caps, and mounting clips. Available in 94" sections.

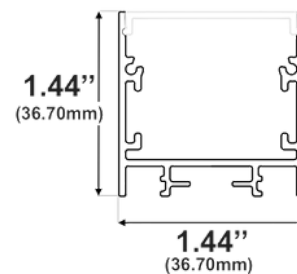


Features

- Compatible with all of EnoLED's LED Tapes
- Hotspot-free
- Black finish
- Available in 94" sections
- Field Cuttable
- Includes a channel, lens, end caps, and mounting clips
- Max tape width: 1.18" (30.00mm)

Dimensions

SL-910-B-94



Width (outside): 0.80" (20.30mm)

Width (inside): 0.68" (17.50mm)

Height: 0.80" (20.30mm)

Length: 0.96" (2.44mm)

Ordering Information

| Ordering Code | Description |
|--------------------|---------------------------------------------------------------------------------------------------------|
| SL-910-B-94 | 94" Channel kit includes 1 channel, 1 cover lens, 2 end caps, 3 mounting clips |
| SL-910-B-94-CL | 94" Cover lens |
| SL-910-B-94-CP-P2 | End caps - 2 pair pack includes 2 open, 2 closed |
| SL-910-B-94-CP-P10 | End caps - 10 pair pack includes 10 open, 10 closed |
| SL-910-B-94-MC-P3 | Mounting clips - 3 units pack |
| SL-910-B-94-PK | Pendant mounting kit - Includes 2 channel mounts, 2 ceiling mounts and mounting wires (sold separately) |