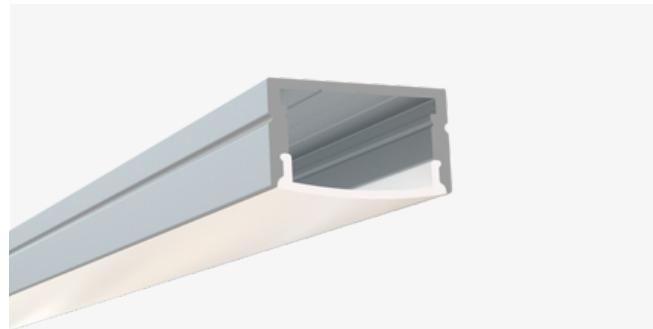


# SL-430-S-94

## Surface Mount LED Channel

### Description

The SL-430-S-94 is a surface mount LED channel. Designed to deliver hotspot-free lighting. It includes a channel, lens, end caps, and mounting clips. Available in 94" sections.

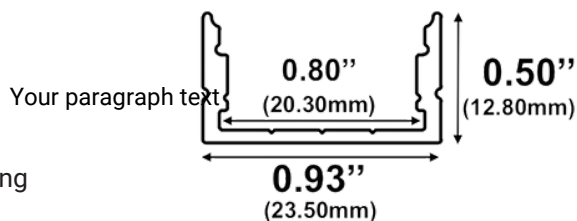


### Features

- Compatible with all of EnoLED's LED Tapes
- Hotspot-free with most LED Tapes
- Aluminium finish
- Available in 94" sections
- Field Cuttable
- Includes a channel, lens, end caps, and mounting clips
- Max tape width: 0.80" (20.30mm)

### Dimensions

SL-430-S-94



**Width (outside):** 0.93" (23.50mm)  
**Width (inside):** 0.80" (20.30mm)  
**Height:** 0.50" (12.80mm)  
**Length:** 0.96" (2.44mm)

### Ordering Information

| Ordering Code      | Description  |
|--------------------|--|
| SL-430-S-94        | 94" Channel kit - Includes 1 channel, 1 cover lens, 2 end caps, 3 mounting clips |
| SL-430-S-94-CL     | 94" Cover lens   |
| SL-430-S-94-EC-P2  | End caps - 2 pair pack includes 2 open, 2 closed                                 |
| SL-430-S-94-EC-P10 | End caps - 10 pair pack includes 10 open, 10 closed                              |
| SL-430-S-94-MC-P3  | Mounting clips - 3 units pack  |