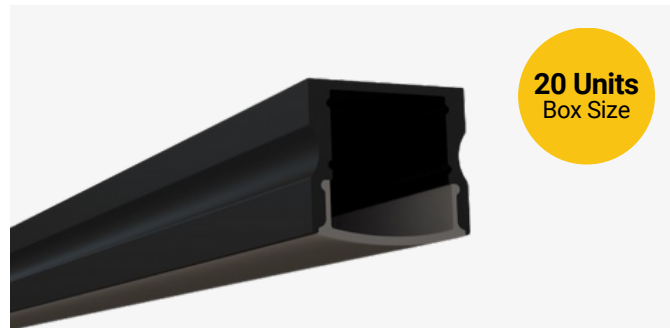


SL-179-BB-94

Surface Mount Channel

Description

The SL-179-BB-94 is a black finish, black lens, surface mount LED channel. Designed to deliver hotspot-free lighting. It includes a channel, lens, end caps, and mounting clips. Available in 94" sections.

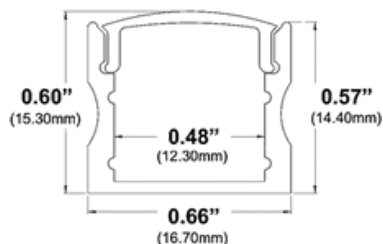


Features

- Compatible with all of EnoLED's LED Tapes
- Hotspot-free with most LED Tapes
- Black finish and lens
- Available in 94" sections
- Field Cuttable
- Includes a channel, lens, end caps, and mounting clips
- Max tape width: 0.47" (12.10mm)

Dimensions

SL-179-B-94



Width (outside): 0.66" (16.70mm)

Width (inside): 0.48" (12.30mm)

Height: 0.60" (15.30mm)

Length: 94" (2.38m)

Ordering Information

| Ordering Code | Description |
|---------------------|---|
| SL-179-BB-94 | 94" Channel kit - Includes 1 channel, 1 cover lens, 2 end caps, 3 mounting clips and screws |
| SL-179-BB-94-CL | 94" Cover lens |
| SL-179-BB-94-EC-P2 | End caps - 2 units pack |
| SL-179-BB-94-EC-P10 | End caps - 10 units pack |
| SL-179-BB-94-MC-P3 | Mounting clips - 3 units pack |