

RL-851-S-94

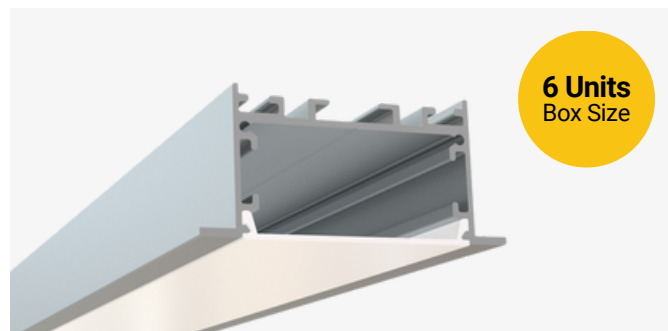
Recessed Mount LED Channel

Description

The RL-851-S-94 is recessed mount LED channel. It includes a channel, lens, and end caps. Available in 94" sections.

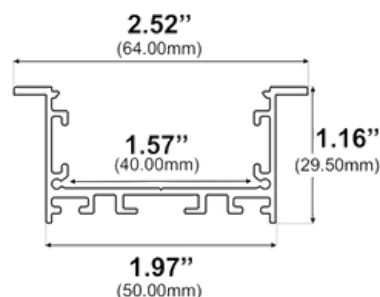
Features

- Compatible with all of EnoLED's LED Tapes
- Hotspot-free
- Aluminum Finish
- Available in 94" sections
- Field Cuttable
- Includes a channel, lens, and end caps
- Max tape width: 1.57" (40.00mm)



Dimensions

RL-851-S-94



Width (outside): 2.52" (64.00mm)

Width (inside): 1.57" (40.00mm)

Height: 1.16" (29.50mm)

Length: 94" (2.38m)

Ordering Information

| Ordering Code | Description |
|--------------------|--|
| RL-851-S-94 | 94" Channel kit - 1 aluminum channel, 1 frosted cover lens, 2 end caps |
| RL-851-S-94-FL | Cover Lens (Frosted) |
| RL-851-S-94-EC-P2 | End caps - 2 units pack |
| RL-851-S-94-EC-P10 | End caps - 10 units pack |
| RL-851-S-94-MS | Mounting Spring |