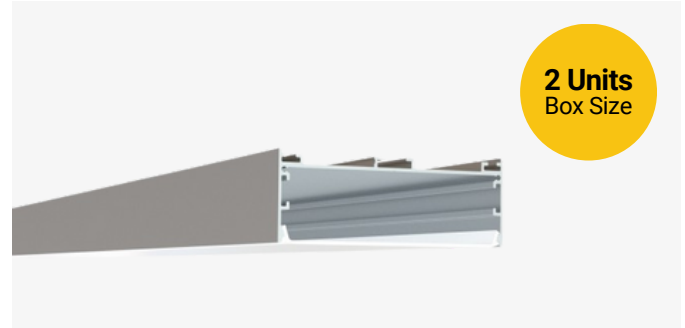


# SL-977-S-94

## Surface / Pendant Mount LED Channel

### Description

The SL-977-S-94 is a surface or pendant mount LED channel. It includes a channel, lens, and end caps. Available in 94" sections.

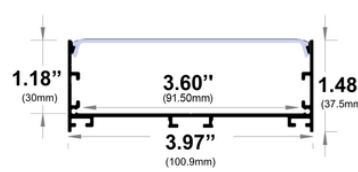


### Features

- Compatible with all of EnoLED's LED Tapes
- Hotspot-free with most LED Tapes
- Aluminum Finish
- Available in 94" sections
- Field Cuttable
- Includes a channel, lens, and end caps
- Max tape width: 3.60" (91.50mm)

### Dimensions

#### SL-977-S-94



**Width (outside):** 3.97" (100.90m)

**Width (inside):** 3.60" (91.50mm)

**Height:** 1.48" (37.50mm)

**Length:** 94" (2.38m)

### Ordering Information

Ordering Code	Description
SL-977-S-94	94" Channel kit - 1 aluminum channel, 1 frosted cover lens, 2 end caps
SL-977-S-94-FL	Cover Lens (Frosted)
SL-977-S-94-EC-P2	End caps - 2 units pack
SL-977-S-94-EC-P10	End caps - 10 units pack
SL-977-S-94-MC-P3	Mounting clips - 3 units pack
SL-977-S-94-PK	Pendant Mounting Kit - Kit includes 2 steel wires of 5ft (1.5m) and connection parts